

28 Hillington Road, Stretford, Trafford, M32 8PB



JP&Brimelow
ESTATE AGENTS



 3  2  1  D

VIDEO TOUR AVAILABLE A unique opportunity to purchase this beautifully presented THREE DOUBLE BEDROOM, detached bungalow, off Edge Lane here in Stretford. The property is situated on one of the area's most popular residential tree lined roads.

The property is situated on one of the area's most popular residential roads and is within walking distance to all local amenities and the Metrolink station in Stretford, which provides a direct link into the City Centre.

This thoughtfully designed property features a porch that leads into an entrance hallway, a generous lounge/dining room with a front-facing window and access to the rear enclosed garden. The modern, fully equipped kitchen/breakfast room includes a breakfast island and additional space for dining seating, with access to a large raised patio area and the enclosed rear lawned garden. There are three double bedrooms, an ensuite three-piece shower room and a further family shower room.


The property features an immaculate private rear garden with a lawn and a spacious gated driveway offering plenty of off-road parking at the front. This remarkable home is a must-see, and an internal viewing is strongly recommended.

£635,000



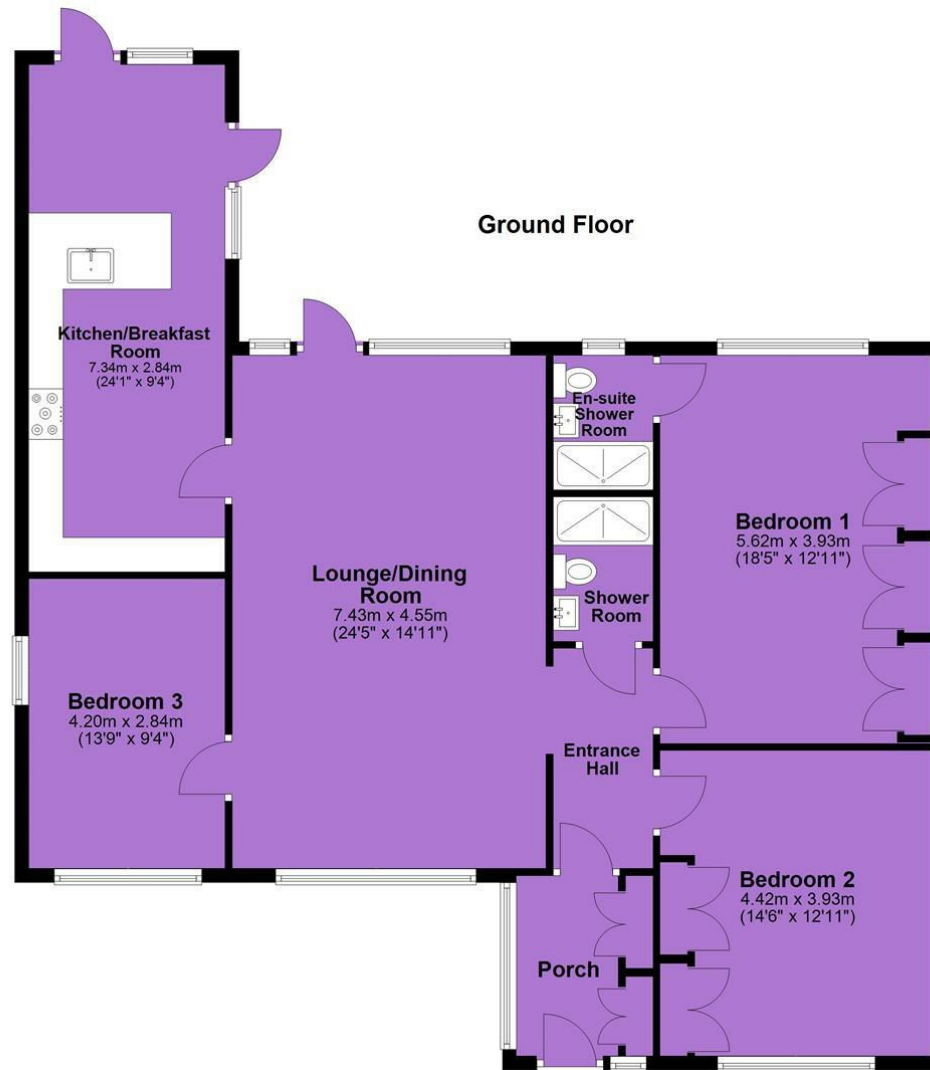


EPC Chart

Energy Efficiency Rating		
	Current	Potential
Very energy efficient - lower running costs		
(92 plus) A	65	82
(81-91) B		
(69-80) C		
(55-68) D		
(39-54) E		
(21-38) F		
(1-20) G		
Not energy efficient - higher running costs		
England & Wales		EU Directive 2002/91/EC 



Tenure: Freehold Council Tax Band: D



JP & Brimelow Estate Agents Ltd
430 Barlow Moor Road, Manchester, M21 8AD
Tel: 0161 8822233
E: sales@jpbrimelow.co.uk www.jpandbrimelow.co.uk



JP & Brimelow
ESTATE AGENTS

NOTICE: JP & Brimelow Estate Agents Ltd for themselves and for the vendors or lessors of this property whose agents they are give notice that:

- (i) the particulars are set out as a general outline only for the guidance of intending purchasers or lessees, and do not constitute, nor constitute part of, an offer or contract;
- (ii) all descriptions, dimensions, references to the condition and necessary permissions for use and occupation, and other details are given in good faith and are believed to be correct but any intending purchasers or tenants should not rely on them as statements or representations of fact but must satisfy themselves by inspection or otherwise as to the correctness of each of them;
- (iii) no person in the employment of JP & Brimelow Estate Agents Ltd has any authority to make or give any representation or warranty whatever in relation to this property.

jpandbrimelowestateagents

@jpandbrimelow

